



## Dominion® SX II

### Raritan's Next Generation Serial Console Server

The Dominion SX II is Raritan's next-generation Serial Console Server (Terminal Server) that provides IT and network administrators secure IP access and control of serial devices, anytime, anywhere. The new SX II is the most powerful, secure, reliable, easy-to-use serial-over-IP device on the market. SX II provides convenient access to networking devices, servers, PDUs, telecommunications and other serial devices.

### Ten Years of Serial Console Experience Built into an Innovative New Platform

For over ten years, thousands of customers have relied on the first generation Dominion SX for access and control of hundreds of thousands of serial devices, representing over 500 million hours of total operation. The SX II builds upon that experience with a wide range of advancements and innovations. Starting with a powerful hardware platform providing performance, reliability and security, the SX II includes virtually all the Serial-over-IP features of its predecessor, plus exciting new capabilities.

### The Ultimate in Performance, Reliability, Security, Manageability and Productivity

With the new Dominion SX II, you can productively access, monitor and control a wide range of serial devices – networking switches/routers/firewalls, servers, power equipment, telecommunications gear and virtually any device with a serial port. With Raritan's CommandCenter, organizations can manage hundreds or even thousands of serial devices, spread across multiple locations, including branch offices. The new SX II incorporates over ten years of serial experience in a powerful, next-generation platform that is easy to install, convenient to use and a snap to manage. Choose the SX II for the ultimate in performance, reliability, security, manageability and productivity.

### Powerful Hardware Platform for High Performance Serial Access

- Powerful 1GHz CPU engine, with an 8-fold increase in RAM
- Flash memory, up to 8 GB, for storage and logging
- Dual power supplies and dual gigabit Ethernet LAN ports, with automatic failover
- 4, 8, 16, 32 and 48 port 1U secure appliances (optional telephone modem)
- Supports 10 connections per port and up to 200 simultaneous sessions

### Convenient Serial-over-IP Access to Enhance your Productivity

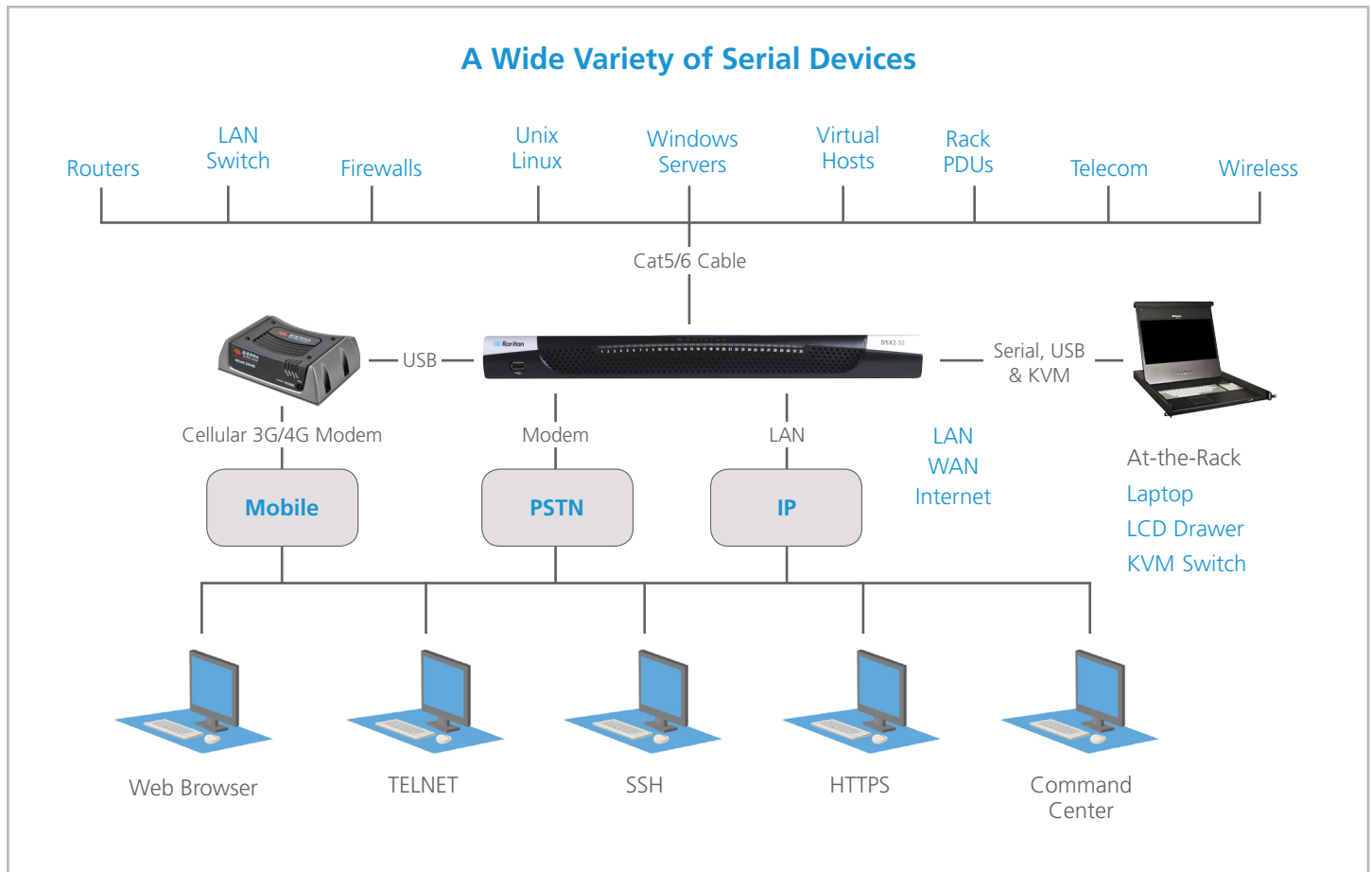
- Complete CLI access and control via SSH, Telnet and GUI
- Web browser access via Raritan Serial Client (RSC) and CommandCenter
- Convenient Direct Port Access methods via SSH, Telnet & HTTP
- At-the-rack access via: (1) Serial console, (2) Laptop/USB or (3) KVM Console



### Contact Us Today

Call 1.800.724.8090 to speak to one of our technical experts

# SX II Offers Multiple Forms of Serial-over-IP Access



## Easy to Manage via CLI, Web and Raritan's CommandCenter

- Full CLI-based configuration and management
- Two script-based automatic configuration methods via USB drive & TFTP server
- Raritan Dominion-compatible management features for firmware updates, backups, etc.
- Access & manage thousands of serial devices via Raritan's CommandCenter Centralized Management product

## Comprehensive Serial Device Access to a Wide Range of Equipment

- Automatic DTE/DCE Serial Port Detection
- Direct connect to Cisco devices without rollover cables!
- Flexible Serial Port Options - BPS, parity, flow control, stop bits
- 1,200 to 230,400 baud serial connections
- Remote power control of Raritan PDU's (with power control menu)
- Port Logging & Triggers for serial sessions

## Military-Grade Security Features

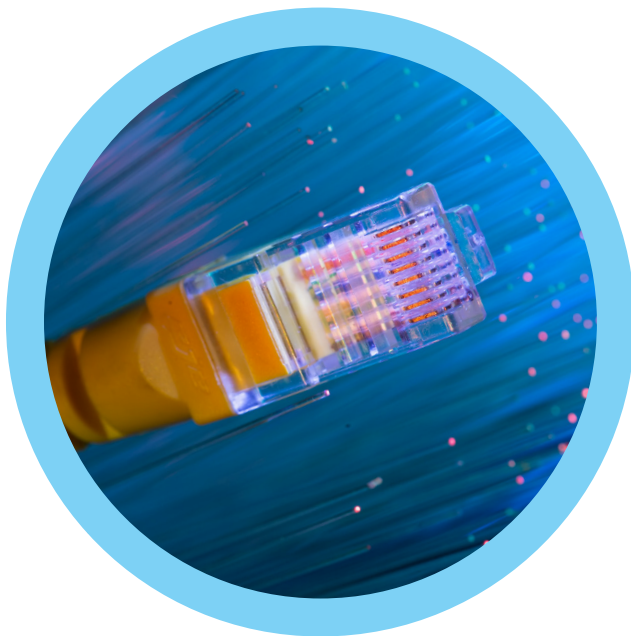
- Certified FIPS 140-2 encryption module
- Strong 256 Bit AES encryption
- Dual-stack IPv4 & IPv6 networking
- External authentication with LDAP, Radius, TACACS & Active Directory
- Fully configurable "iptables" firewall support
- Multiple logging methods: SNMP, Syslog, Email, NFS, internal

# Exciting New Features and Innovations

The SX II new features include: military grade security features (256-bit AES and FIPS 140-2 certified encryption), automatic DTE/DCE serial port detection, innovative at-the-rack access options, wireless modem support, IPv6 networking, and two script based auto-configuration methods.

## Full CLI-based Configuration and Auto-Configuration

The SX II offers complete CLI access and management via SSH, Telnet and web-browser, with convenient direct port access methods. Two script-based automatic configuration methods (TFTP server and USB stick) are available for fast installation and configuration changes.



## Automatic DTE/DCE Serial Port Detection

For fast installations, the SX II supports straight Cat5 connections to Cisco and other compatible RJ-45 devices, without rollover cables. The SX II can also directly replace the first generation SX with compatible serial device connections.

## Innovative At-the-Rack Access

With the Dominion SX II, you get multiple types of local access at-the-rack. This includes: (1) Traditional RJ45 serial port, (2) Mini-USB port for laptop connection, and a (3) DVI & USB-based KVM console for connection to a rackmount keyboard tray, or even a KVM switch.

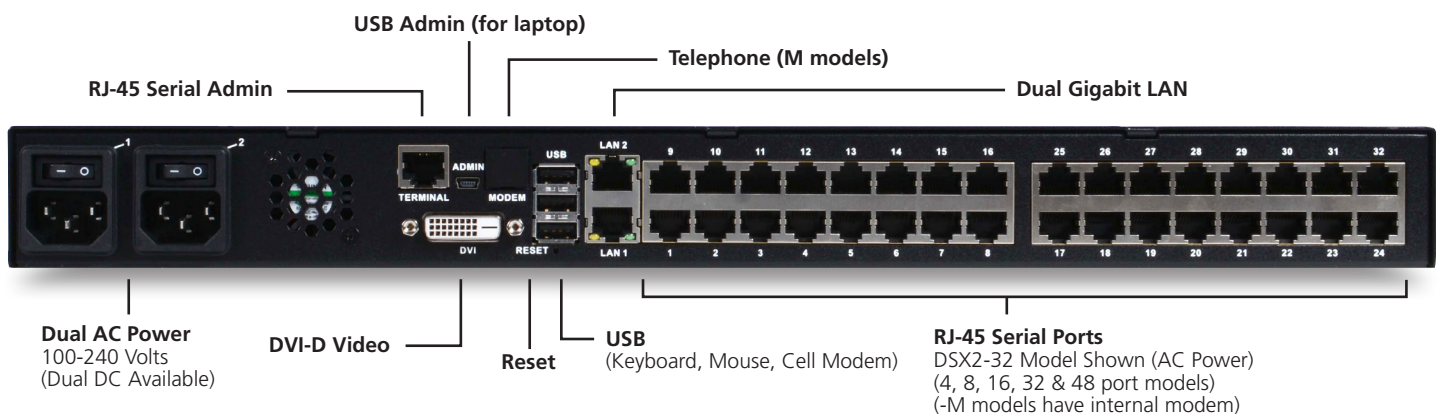


Specifications	
FORM FACTOR	1U, rack mountable
POWER	100/240VAC auto-switching: 50-60 Hz, .35A, 36-72VDC auto-switching
MAX POWER CONSUMPTION	4-Port SX: 21W   8-port SX: 21W   16-port SX: 22W   32-port SX: 23W   48-port SX: 25W
Environmental Requirements	
TEMPERATURES	Operating: 0°C – 50°C. Non-Operating: 0°C – 55°C
HUMIDITY	Operating: 20% – 85%. Non-Operating: 10% – 90%
ALTITUDE	Operates properly at any altitude from 0 to 2,000 meters
APPROVALS	CE, FCC Part 15 Class A, US UL
Remote Connection	
NETWORK	Dual 10/100/1000 Gigabit Ethernet (RJ-45)
PROTOCOLS	TCP/IP, PPP, PAP, HTTP, HTTPS, SSL, SSH, TACACS+, LDAP(S), RADIUS, SNMP. IPv4 & IPv6. Automatic fail-over or independent LAN ports
WARRANTY	Two Years with Advanced Replacement*. Can purchase additional 3 year warranty.

Models	Description
DSX2-4 / DSX2-4M	4-port serial console server with dual-power AC and dual gigabit LAN. Serial, USB and KVM local console ports. 19" rack mount kit. (M in model = internal telephone modem)
DSX2-8 / DSX2-8M	8-port serial console server with dual-power AC and dual gigabit LAN. Serial, USB and KVM local console ports. 19" rack mount kit. (M in model = internal telephone modem)
DSX2-8M-DC	8-port serial console server with dual-power DC and dual gigabit LAN. Serial, USB and KVM local console ports. 19" rack mount kit. Internal telephone modem.
DSX2-16 / DSX2-16M	16-port serial console server with dual-power AC and dual gigabit LAN. Serial, USB and KVM local console ports. 19" rack mount kit. (M in model = internal telephone modem)
DSX2-32 / DSX2-32M	32-port serial console server with dual-power AC and dual gigabit LAN. Serial, USB and KVM local console ports. 19" rack mount kit. (M in model = internal telephone modem)
DSX2-32M-DC	32-port serial console server with dual-power DC, dual gigabit LAN. Serial, USB and KVM local console ports. 19" rack mount kit. Internal telephone modem.
DSX2-48 / DSX2-48M	48-port serial console server with dual-power AC and dual gigabit LAN. Serial, USB and KVM local console ports. 19" rack mount kit. (M in model = internal telephone modem)
DSX2-48M-DC	48-port serial console server with dual-power DC, dual gigabit LAN. Serial, USB and KVM local console ports. 19" rack mount kit. Internal telephone modem.

Serial Adapters	
ASCSDB9F	RJ-45(F) TO DB9(F) serial adapter
ASCSDB9M	RJ-45(F) TO DB9(M) serial adapter
ASCSDB25F	RJ-45(F) TO DB25(F) serial adapter
ASCSDB25M	RJ-45(F) TO DB25(M) serial adapter

Adapters for Raritan PDUs	
CSCSPCS-1	1' Cat5e RJ-45(M) to RJ-45(F) adapter to connect Dominion SX II to Raritan PX or RPC rack PDUs
CSCSPCS-1-5PK	Package of 5 CSCSPCS-1 rack pdu adapters
CSCSPCS-10	10' Cat5e RJ-45(M) to RJ-45(M) cable to connect Dominion SX II to Raritan PX or RPC rack PDUs



Call 1.800.724.8090 to learn more about the next-generation Dominion SX II