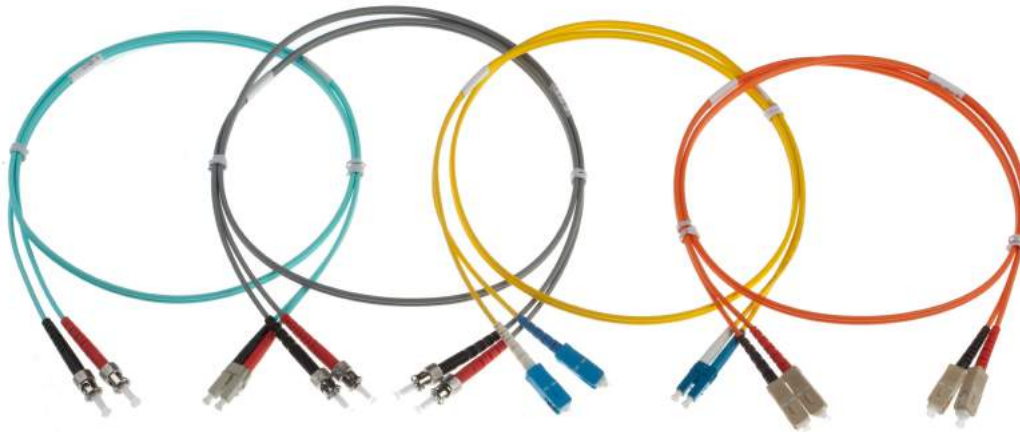


## Fibre Optic Patch Cords

Used for connecting between cables and active equipment, Nenco patch cords are manufactured from the highest quality connectors and cables. Patch cords are manufactured using 900um fibres surrounded by aramid yarns and a LSOH sheath, providing rugged, reliable connections. Connectors are precision polished in the factory using advanced techniques to ensure a reliable, high quality termination every time.



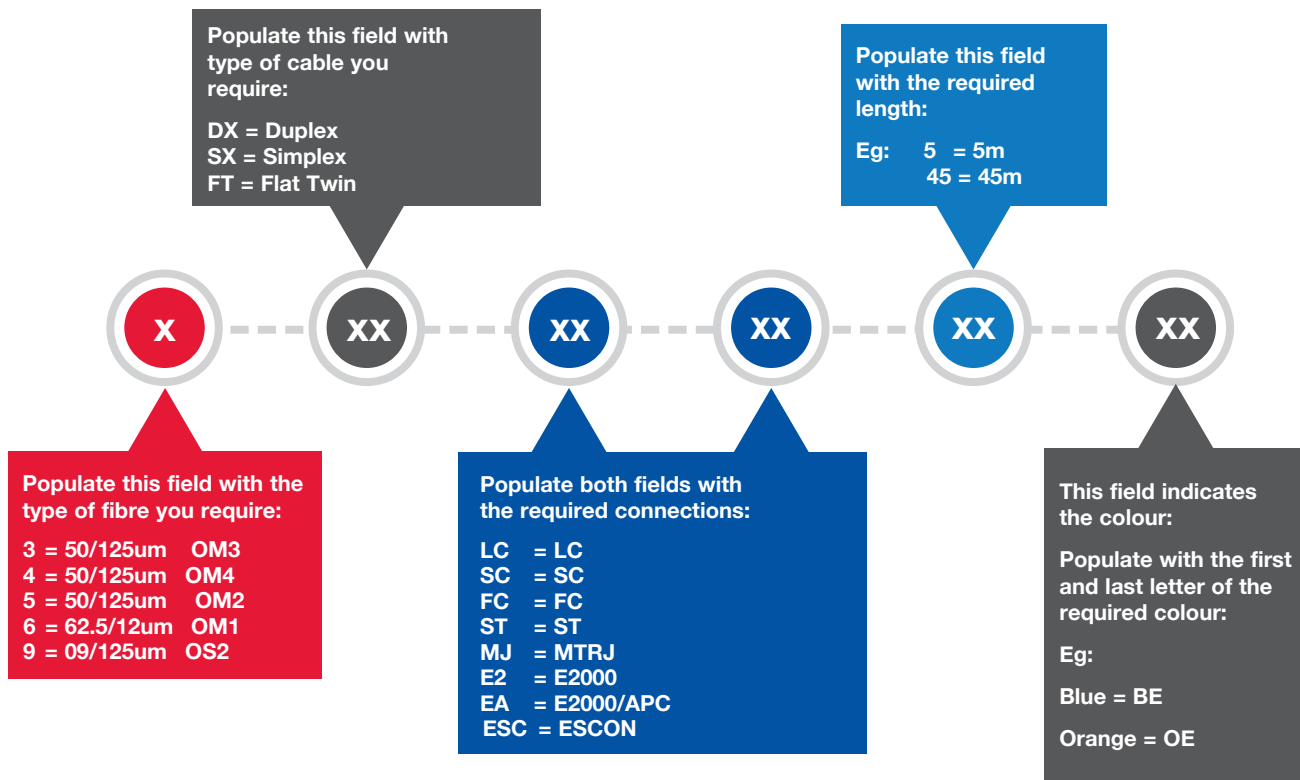
As standard, patch cords are supplied manufactured on 2.8mm diameter cables, with 1.8mm diameter available on request. Cable configurations are simplex, duplex zip cord and duplex flat twin. Multimode patch cords use red and black connector boots and Singlemode patch cords use blue and white connector boots for ease of identification.

All patch cords are 100% tested and individually bagged with the test certificate incorporated into the label affixed to the bag. Through our stringent manufacturing process, our patch cords have a maximum expected insertion loss that should not exceed 0.3dB and will typically be much lower than this. Our patch cords are also subject to tension, vibration and impact tests to ensure reliability.

<u>Optical Performance</u>	<u>SM</u>	<u>MM</u>
<b>Insertion Loss</b>	0.3dB	0.3dB
<b>Typical</b>	0.25dB	0.2dB
<b>Return Loss (greater than)</b>	-50dB	-20dB

Cable Specification	Simplex	Zip	Flat Twin
Diameter	2.8mm	2.8 x 5.5mm	3 x 5mm
Tensile Strength	300N		
Crush Resistance	1000N		
Min .Bend Radius: Loaded	60mm		
Min. Bend Radius: Unloaded	30mm		
Operating Temperature	-20°C to -60°C		

## Product Matrix



EG: 6-DX-SC-ST-1-GY = 62.5/125UM 1M SC-ST DUPLEX PATCHCORD, GREY